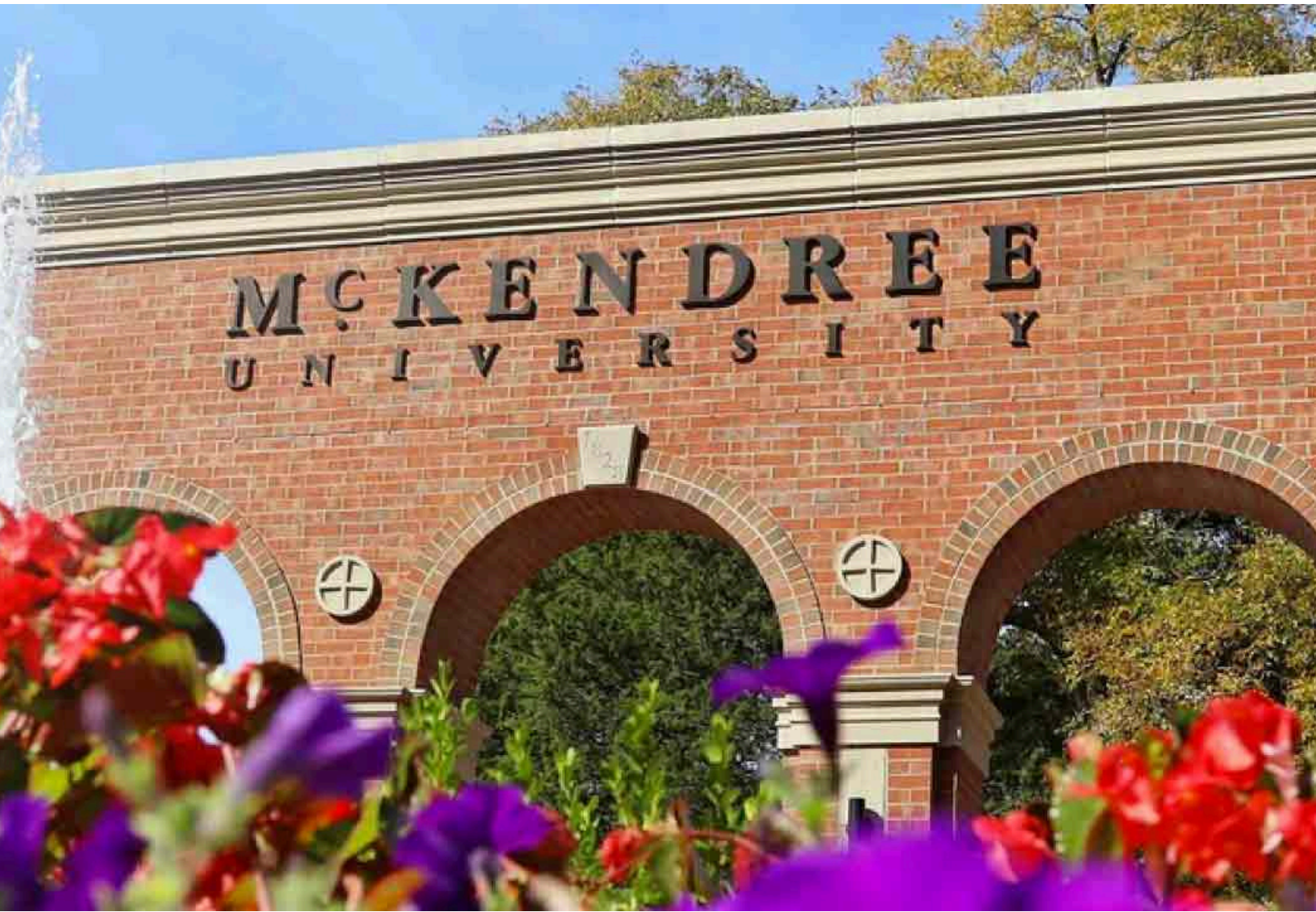


MCKENDREE UNIVERSITY | 2024-2025

MOVE-IN GUIDE



WELCOME HOME
BEARCATS!



PRIOR TO MOVE-IN CHECKLIST

- Complete your Housing Application. Provide accurate and honest information - we'll use this to find your best match.
- Complete the Confidential Medical History and Immunization Record by August 1st, Found on the ResLife Portal which is accessible through your MyMcK Page.
- For new first-year or transfer students, you will also need to register for New Student Orientation (NSO). Please work with your Admission Counselor to do this as it must be completed before you can select a move-in appointment.
- Check your email for your Fall Housing Placement announcement. All Housing Placements will be announced by June 21. If you signed up for a Housing Placement after June 14, then you will receive an email later regarding your fall placement.
- Contact your roommate(s) to get to know them and discuss who will bring specific items for the room. Residence Life will only provide your roommate's McK email. If you have not heard back from your roommate(s) after a couple of weeks, then feel free to reach out to the Office of Residence Life and we will contact the roommate(s).
- Sign up for a FAST Forward check-in time. New first-year and transfer students will be able to do this once their NSO Registration is complete. International students should give their arrival information to their Admissions Counselor. Returning students can do this after they select their housing assignment.
- Familiarize yourself with the information covered in the McK Student Handbook. Students are held accountable to the Code of Student Conduct and are expected to know this.
- Begin packing your belongings. Use our Tips & Tricks for a more seamless moving process.
- Relax and enjoy your summer!**

MOVE-IN DATES

STUDENT MOVE-IN

New Students (First-Year and Transfer Students) - Piper Academic Center
Thursday, August 22, 2024 - for those that are not Fall early arrivals listed below

Returning Students - Clark Hall Lobby
Friday, August 23, 2024 to Sunday, August 25, 2024

FALL EARLY ARRIVAL MOVE-IN

Saturday, August 10, 2024

- Football
- Cheer Teams

Saturday, August 17, 2024


- Dance Team
- Women's and Men's Cross Country
- Women's and Men's Soccer
- Women's Indoor Volleyball
- Spirit Band

Monday, August 19, 2024


- Men's Waterpolo
- Speech and Debate Teams
- NSO Leaders
- Approved Move-In Helpers

Tuesday, August 20, 2024

- Last day for international students attending International Student Orientation to arrive.



New first-year and transfer international students should give their arrival information to their Admission Counselor as soon as possible.



MOVE-IN DAY INSTRUCTIONS

1

ARRIVAL TO CAMPUS & PARKING

Plan accordingly for traffic if traveling through urban areas. Be aware of weather changes including rain, thunderstorms, or other inclement weather.

Arriving early can be nice, but you will still need to wait until your FAST Forward Check-In Appointment.

2

CHECKING-IN

Enter Parking Lot C and from Alton St. and walk over to Piper Academic Center (PAC) (Building 12) for the FAST Forward Check-In. This check-in will include offices such as: Student Success, Health Services, Public Safety, Residence Life, etc. in order for students to provide any necessary paperwork, schedule fixes, obtain parking permits, receive keys, etc.

3

LOCATE YOUR HALL

Once finished at the FAST Forward Check-In, use the campus map to locate your hall/area for move-in. Follow campus signage to your residential area.

4

MOVE INTO YOUR ROOM

Locate your room and create a game plan for unloading/unpacking your belongings. Make sure to complete your Room Condition Report!

5

UNLOAD YOUR VEHICLE

Unload your belongings from your vehicle in the designated unloading zones. After you have unloaded, you **MUST** move your vehicle to designated parking lots so others can unload.

WHAT IS FAST FORWARD?

So that our students are fully registered and ready to start the year, we have arranged several touchpoints to Facilitate your Arrival, Success, and Transition (FAST). FAST Forward will enable students to sign up for a check-in time and meet with representatives from the student support departments at McKendree. Whether you are an early-arrival athlete, a first-year international student, a commuter student arriving for New Student Orientation, etc., FAST Forward is your first step to a successful academic year.

MOVE-IN DAY TIPS & TRICKS

- Students will have a few hours to go through the check-in process and to unload and move everything into their residential space. The goal is to be prompt without rushing.
- Carry your ID with you at all times and know your student ID number, you will need it to eat, gain access to your building, and many more things. To be extra prepared, take a photo of the front and back of your ID Card in case you forget or misplace it. NEVER give your ID number to anyone but a University employee.
- Label boxes and all items with the student's name, building, and room number - don't forget the bedroom letter if you are in a suite or apartment.
- Remember that one person should stay with the vehicle at all times until it is fully unloaded. Then you move to the proper parking location.
- Wear comfortable clothes and shoes as you will have to park your vehicle in a further parking lot once unloading is completed
- Early Arrivals should not anticipate move-in assistance on their arrival day.
- If you live more than 400 miles away and wish to ship items to McKendree University, work with Mail Services before placing your order by calling them at (618) 537-6927





MOVE-IN DAY LOGISTICS

Unloading Zones

20-minutes or less and then move to long-term parking

Baker (#4 on map) Unloading Zones

-Lot C and Fountain Drive

Walton (42) Unloading Zones

-Lot C

Barnett (5) Unloading Zones

-Lot J and Stanton Street Parking

Summerfield Suites (38) Unloading Zones

-Lot F

Residence Halls East/West (30-31)

Unloading Zones

-Lot I and Stanton Street Parking

Hunter St. Apartments (45)

-There is no unloading zone. Residents are asked to be cognizant of time, parking space availability, and other residents.

McK West Apartments (47 and 48)

-There is no unloading zone. Residents are asked to leave the spaces by the main entrance clear during the move-in days so other residents can move their property in easier.

See our Campus Map



Long-Term Parking Lots

-Lots D & E

-Back rows of Lot C

-Lots H near MPCC

You must park your vehicle here after unloading

Questions during Move-In?

Call the Area Duty Phone:

- Baker/Barnett/Walton: (618) 975-4388
- Residence Hall East & West, Summerfield Suites, & Hunter St. Apartments: (618) 304-6366
- McKendree West: (618) 975-4386

COMMON MISTAKES TO AVOID

1 BRINGING PROHIBITED ITEMS

Please read the list on the right to understand what items are allowed and prohibited. Additionally, refer to the Student Handbook for additional information about prohibited items.

2 USING COMMAND STRIPS

Unlike the commercials suggest, Command Strips and other wall adhesives destroy paint upon removal. Students are charged for this damage. McK recommends sticky tack, masking tape, or painter's tape!

3 BRINGING MORE THAN ONE MINI-FRIDGE OR MICROWAVE

Only one mini-fridge and one microwave per bedroom are allowed. Mini-fridge should be smaller than 3.7 cubic feet.

4 BRINGING PETS

Unless you have submitted the correct paperwork and been approved by Disability Services AND Residence Life for a service/support animal, ALL animals except for fish are PROHIBITED and violation of this will result in a conduct documentation and possible fine.

5 NOT COMMUNICATING WITH ROOMMATE PRIOR

Please communicate with your roommate(s) prior to move-in. You don't need two of everything!



WHAT TO BRING

- Trash Can and Trash Bags
- Cleaning Supplies
- Clothes, Hangers & Laundry Supplies
- Computer/Laptop
- Pillows & bedding
- School Supplies
- Shower Shoes & Shower Caddy
- Toiletries
- Area Rug if you desire
- Microwave (one per room)
- Mini-refrigerator (one per room)
- Power Strips (UL approved)
- Quarters for Laundry or use the App
- Bike Lock if you bring a Bike
- First Aid items, Thermometer
- TV & gaming consoles
- Mattress Pad
- Personal Decor Items

Suggested items for apartment living:

- Dishes & Eating utensils
- Living room furniture
- Pots & Pans
- Shower Curtains
- Toilet Paper

WHAT NOT TO BRING

- Alcohol
- Animals
- Candles/Incense
- Drugs
- Weapons
- Space Heaters
- Toasters/Toaster Oven
- LED Adhesive Lights
- See all our policies in the Student Handbook on the McKendree website.
- Airsoft Guns
- Bass Stereo Equipment
- Crock Pots
- Grills
- Halogen Lamps
- Hot Plate
- Air Fryers

HOTELS & FOOD

NEARBY

HOTELS

Drury Inn & Suites St. Louis

1118 Central Park
O'Fallon, IL 62269
Phone: (618) 624-2211

Hilton Garden Inn O'Fallon

360 Regency Park
O'Fallon, IL 62269
Phone: (618) 624-4499

Best Western Plus Mascoutah

9730 Hayden Dr,
Mascoutah, IL 62258
Phone: (618) 808-0280

Holiday Inn Express & Suites

3396 Green Mount Crossing Drive
Shiloh, IL 62269
Phone: (618) 632-0400

FOOD

Brewers Bar & Grill

227 W. Saint Louis St.
Lebanon, IL 62254

Lebanon Fish, Chicken, and Food

321 S. Madison St.
Lebanon, IL 62254

McDonald's

713 S. Madison St.
Lebanon, IL 62254

Domino's Pizza

9785 Hayden Dr.
Mascoutah, IL 62258

Pizza Hut

729 W. Hwy 50
O'Fallon, IL 62269

DQ Grill & Chill

412 S. Madison St.
Lebanon, IL 62254

The Lantern

220 W. St. Louis St.
Lebanon, IL 62254

Subway

224 S. Madison St.
Lebanon, IL 62254

The Gasthaus

115 West St. Louis St.
Lebanon, IL 62254

Mexico Tipico

501 Madison St.
Lebanon, IL 62254

SHOPPING NEARBY

GROCERIES & NECESSITIES

Dollar General

707 S. Madison St.
Lebanon, IL 62254

Schnucks Groceries

907 E. Hwy 50
O'Fallon, IL 62269

ALDI

1635 West US Highway 50
O'Fallon, Illinois 62269

Target

3400 Green Mt. Crossing Dr.
Shiloh, IL 62269

Walmart Center Center

Lincoln Crossing 1530 US-50
O'Fallon Il, 62269

Don's IGA

651 S. Madison St.
Lebanon, IL 62254

DRUG STORES & PHARMACIES

CVS

753 W Hwy 50
O'Fallon, IL 62269

Prescription Plus in True Value

753 True Value Dr
Lebanon, IL 62254

Walgreens

704 Cambridge Blvd
O'Fallon, IL 62269

CLOTHING & OTHER SHOPPING

St. Clair Square Mall

134 St. Clair Square
Fairview Heights, IL 62208

Old Navy

6015 N. Illinois St.
Fairview Heights, IL 62208

TJ Maxx

10850 Lincoln Trail
Fairview Heights, IL 62208

Marshalls

5935 N. Illinois St.
Fairview Heights, IL 62208

Ross Dress for Less

6005 N. Illinois St.
Fairview Heights, IL 62208

Good Will

125 Commerce Lane
Fairview Heights, IL 62208

INSURANCE, BEDDING & LAUNDRY

Renter's Insurance

Renter's insurance is highly recommended for students attending McKendree University. We recommend National Student Service, Lemonade, Grad Guard, and College Student Insurance from Gallagher & Co.

Bedding

McKendree provides students with extra-long twin mattresses (Twin-XL). Dormify has been a long-time provider of Twin-XL bedding at an affordable price for McKendree students. To view their bedding options, go to www.dormify.com.

Laundry

McKendree University offers laundry facilities in every building or area. Laundry machines on the main campus can be operated by quarters or the CSC GO app.

Machines in McKendree West only use the CSC GO app to operate the machines in the Clubhouse laundry room.

Laundry Locations

Baker, Barnett, Walton: machines located on every floor

Summerfield Suites: machines located on ground floor in the middle of the building

Residence Hall East & West: machines located on the first floor on the Residence Hall East just to the left past the elevator

Hunter Street Apartments: machines located in the basements

McKendree West Apartments: machines located in the McKendree West Clubhouse

Change Machines

McKendree has one location on campus where students can exchange \$1 and \$5 bills for quarters. One change machine is located in the Lair on the main campus.



Use Phone Camera



**GET THE
APP NOW!**

MyCSCGo.com

CSC GO

BUILDING SPECIFICS

TRADITIONAL HALLS

Baker Hall

On-Call Duty Phone
(5pm-8am weekdays & all-day on weekends)
(618) 975-4388

Barnett Hall

On-Call Duty Phone
(5pm-8am weekdays & all-day on weekends)
(618) 975-4388

Walton Hall

On-Call Duty Phone
(5pm-8am weekdays & all-day on weekends)
(618) 975-4388

Mailing Address on Campus

Student Name
701 College Rd.
Name of Hall & Room Number
Lebanon, IL 62254

For Example:
Bogey Bearcat
701 College Rd.
Walton 421
Lebanon, IL 62254

SUITE-STYLE

Summerfield Suites

On-Call Duty Phone
(5PM-8AM weekdays & all-day on weekends)
(618) 304-6366

Residence Hall East & West

On-Call Duty Phone
(5PM-8AM weekdays & all-day on weekends)
(618) 304-6366



APARTMENT STYLE

Hunter Street Apartments

On-Call Duty Phone
(5PM-8AM weekdays & all-day on weekends)
(618) 304-6366

McKendree West Apartments

On-Call Duty Phone
(5PM-8AM weekdays & all-day on weekends)
(618) 975-4386

Mailing Addresses in Apartments

Student Name
Building Number and Street, Apt
Lebanon, IL 62254

Hunter St. Example:
Bogey Bearcat
531 Hunter St., Apt 5
Lebanon, IL 62254
or

McK West Example:
Samuel Sample
1217 College Rd., Apt 7
Lebanon, IL 62254

All McK West Apartment are
building # (1201,1203, etc.) on College Road

HOUSING PRICES

TRADITIONAL HALLS (FIRST YEAR OPTIONS)

*Baker Hall, Barnett Hall, and
Walton Hall*

*Double Room - \$2,735/semester
Single Room - \$3,640/semester*



SUITE-STYLE OPTIONS (FIRST YEAR & UPPER-DIVISION OPTIONS)

Summerfield Suites

*Double Room - \$2,735/semester
Single Room - \$3,640/semester*

Residence Hall East/West

*Double Room - \$3,590/semester
Single Room - \$3,735/semester*



RESIDENCY REQUIREMENT

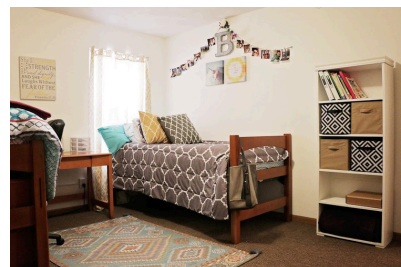
McKendree University's residency requirement stipulates that all full-time (12+ credit hours) undergraduate students must live in University housing or University-certified housing

APARTMENT STYLE (UPPER-DIVISION OPTIONS)

Hunter Street - \$3,865/semester

McKendree West Apartments

*Double Room - \$3,865/semester
Single Room - \$5,140/semester*



WHY LIVE ON-CAMPUS?

McKendree University strongly believes in the value of the on-campus residential experience as an important educational component for student success. Studies have shown the following regarding students living on campus while attending college:

- Students earn better grades
- Students build stronger ties to the University
- Students build more meaningful relationships with peers
- Students are generally more satisfied with their college experience
- Students are more likely to graduate



DINING INFORMATION

MEAL PLANS & PRICES

19 Meals per week + \$50 Flex Dollars = \$3,290 a semester.

15 Meals per week + \$75 Flex Dollars = \$3,015 a semester.

10 Meals per week + \$100 Flex Dollars = \$2,635 a semester.

25 Meals per semester = \$235 a semester (Commuter and Apartment Residents Only).

*Students living in Baker, Barnett, Walton, the Suites or Residence Hall East/West are required to have a meal plan.

*MEALS RESET SATURDAY MORNINGS FOR THE FOLLOWING WEEK



MEAL PLAN INFORMATION

Flex Dollars: Comes as part of meal plans and amount is dependent upon meal plan. They can be used in Ames Dining hall for guests or when meals run out. Flex can also be used at 1828 Cafe. Flex dollars expire at end of each semester.

Bogey Bucks (Munch Money): Can be purchased by anyone at the university (students without a meal plan, commuters, faculty/staff and students who want to supplement their flex dollars). They roll over from fall to spring semester but expire at the end of each academic year. For deposits over \$100, a 10% bonus is added to account. Bogey Bucks are loaded to ID card. can be used at Ames or 1828 Cafe. Can be added at mckendree.sodexomyway.com or at any register in Ames or 1828. Bogey Bucks are also tax-free!

1828 Meal Exchange: Applies only to those with a 15 or 19 meal plan. For students who cannot make it to Ames Dining Hall during regular lunch or dinner times, the 1828 Meal Exchange can help. Meal exchange begins 9am-10am for breakfast, lunch is 1:30pm-3pm Monday-Friday, and dinner is 7pm-8:30pm Monday-Thursday in 1828 Cafe. During this time, those with a 15 or 19 meal plan can use a "meal swipe" instead of Flex Dollars or Bogey Bucks to order off the Meal Exchange menu.

DINING HOURS

Ames Dining Hall

MONDAY - FRIDAY

BREAKFAST: 7AM - 10AM

LUNCH: 11AM - 1:30PM

DINNER : 4:30PM - 7PM

SATURDAY - SUNDAY

BRUNCH: 11AM - 1PM

DINNER: 5PM - 6:30PM

1828 Cafe

MONDAY - THURSDAY

8:00AM - 8:30PM

FRIDAY

8:00AM - 3:00PM

SATURDAY-SUNDAY

CLOSED

OTHER CAMPUS INFO

Bogey Bus - Campus Shuttle

Jump on board the Bogey Bus! McKendree offers shuttle transportation all around our Lebanon campus. The shuttle runs Monday through Friday in 20 minute loops.

See the website for more details (<https://www.mckendree.edu/student-life/res-life/shuttle.php>)

Residence Hall Association (RHA)

The McKendree Residence Hall Association (RHA) is an inclusive organization of student representatives working together to create a sense of community on campus through educational, service, and social programming. RHA also provides leadership and development opportunities for members while working to improve campus life.

You can get involved by becoming a building or area rep in the Fall!



The Lair

The Lair is located underneath the McKendree Bookstore (next to Barnett Hall) and is a lounge for students to hang out, play games and socialize. The Lair has board games, pool tables, and video game systems. The Lair will be opening after remodeling at the start of the Fall 2024 semester.

The Lair Hours:

Sunday - Sunday: 11:00 AM – 11:00 PM



SEE YOU IN AUGUST!